

yc ec ne Ac, Co on

Ne Point D.a.S ho s o e s O e h e i n g S a p p o h e P a y d e c i n e s s A c

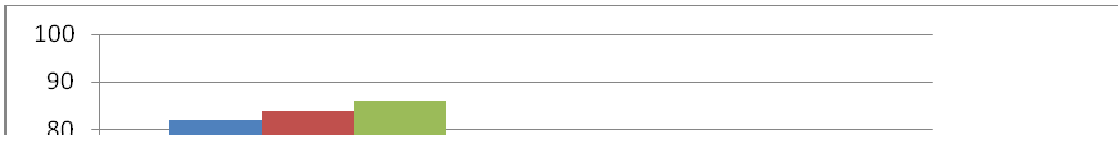
s a d h e y s a p p o

• • • • •

Members of All Political Parties Strongly Support Improving our Equal Pay Laws:

Members of all Racial and Ethnic Groups Strongly Support Improving our Equal Pay Laws:

of Blacks, of Hispanics, 6 of Whites
of Blacks, of Hispanics, 3 of Whites strongly support the new law.



Domestic Violence, Economic Security,
and the Needs of Mass Incarcerated Women
Business Ac

Questions on the poll? Contact Sharyn Tejani, National Partnership for Women and Families,
202.986.2600, stejani@nationalpartnership.org.

available at <#> <#> <#> <#> <#> <#> <#> <#>

available at <#> <#> <#>

available at <#> <#> <#> <#> <#> <#> <#> <#>

available at <#> <#> <#> <#> <#> <#> <#>