

(b)(6)

(b)(6),(b)(7)(C)

From:

Sent:

Monday, May 24, 2010 10:09 AM

To:

(b)(6),(b)(7)(C),(b)(7)(F)

Subject:

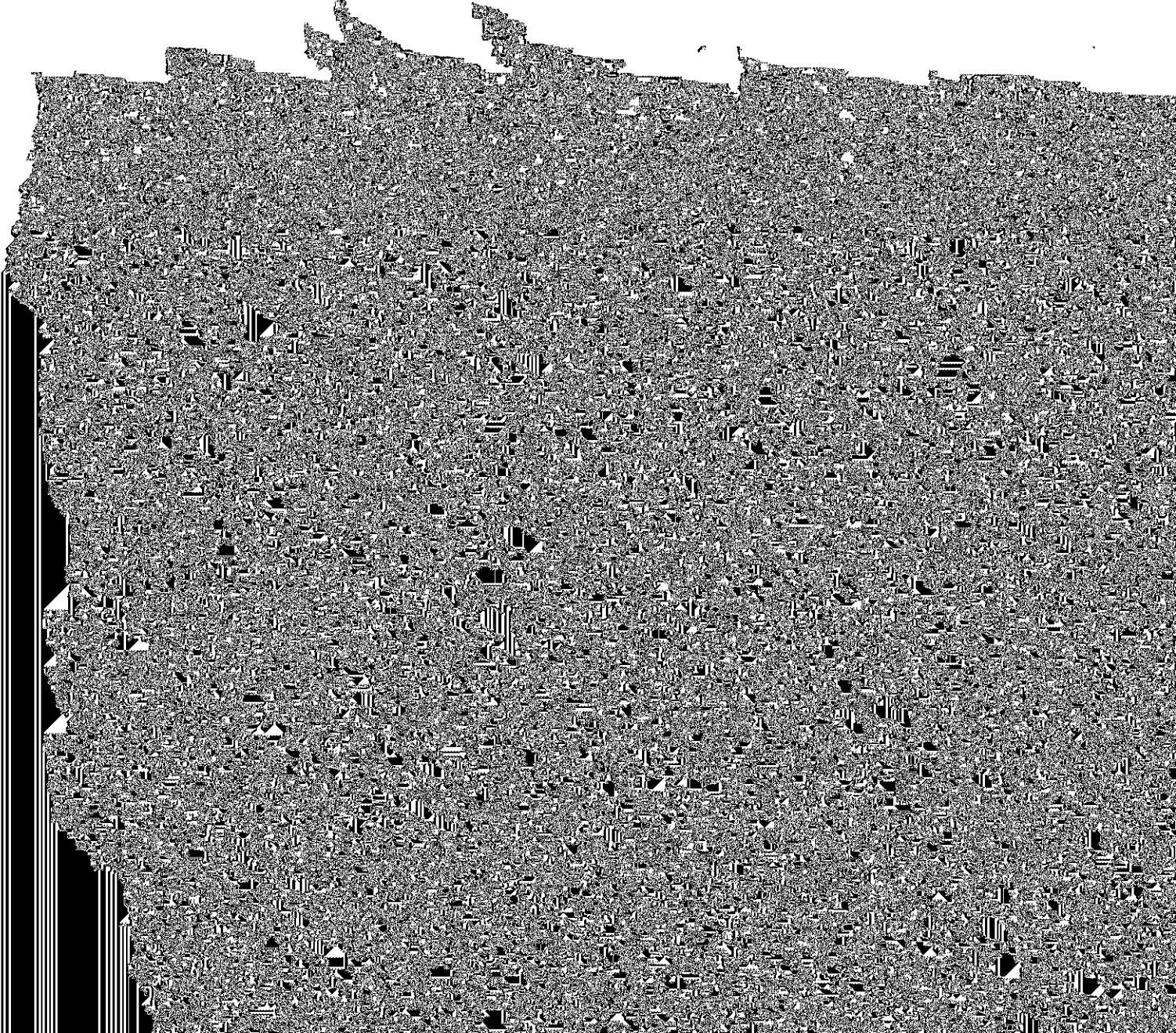
RE: Status of LPR.

Dear Mr. (b)(6),(b)(7)(C),(b)(7)(F)

Non Responsive

6 Devices are associated with the (b)(7)(E) lanes at (b)(7)(E)

8 Devices are associated with the (b)(7)(E) HIDTA.



Non Responsive

